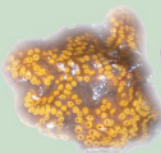




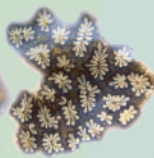
Arénicole  
*Arenicola marina*



Spirorbe  
*Spirorbis* sp.



Botrilles  
*Botryllus* sp.



Etoile de mer glaciale  
*Marthasterias glacialis*



## ANNELIDES



Sabelle  
*Sabella* sp.



Lanice  
*Lanice conchylega*



Serpule  
*Serpula vermicularis*



Polychète errant  
*Nereis* sp.

© R. Perdiat - LPO



Ascidie  
*Ascidia conchilega*

## TUNICIERS



Claveline  
*Clavelina lapadiformis*



Ophiure  
*Ophiotrix fragilis*



Asterine  
*Asterina gibbosa*

## ECHINODERMES



Holoturie  
*Holoturia forskali*



Oursin-pierre  
*Paracentrotus lividus*



Sacculine  
*Sacculina* sp.



Ligie  
*Ligia oceanica*



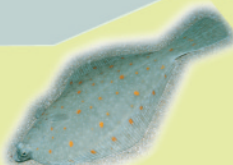
Crabe vert  
*Carcinus maenas*



Crevette rose  
*Palaemon serratus*



Gobie  
*Gobius* sp.



Plie  
*Pleuronectes platessa*



Galathée  
*Galathea* sp.

## CRUSTACES



Porcellane  
*Porcellana platycheles*



Etrille  
*Necora puber*



Balane  
*Chtamalus montagui*



Syngathe  
*Syngnathus* sp.



Dragonnet  
*Callionymus* sp.

## POISSONS



Puce de mer  
*Talitrus saltator*



Tourteau  
*Cancer pagurus*



Sole  
*Solea solea*



Vieille  
*Labrus bergylta*



Motelle  
*Ciliata mustela*



Bernard-l'ermite  
*Eupagurus bernhardus*



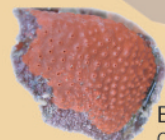
Crevette grise  
*Crangon crangon*



Blennie  
*Parablennius* sp.



Lepadogaster  
*Lepadogaster* sp.



Eponge rouge  
*Oscarella lobularis*



Vive  
*Spirorbis* sp.



Lançon  
*Ammodytes tobianus*

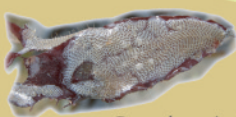
## SPONGIAIRES



Ficuline  
*Suberite* sp.

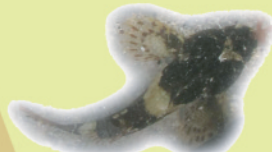


Eponge



Bugule spiralée  
*Bugula turbinata*

## BRYOZOAIRES



Scorpion de mer  
*Myoxocephalus scorpius*

Tailles non proportionnelles

Diffusion, tous droits réservés : LPO, Réserve Naturelle des Sept Îles, Station LPO de l'Île Grande  
22560 Pleumeur Bodou - France. Tél 02 96 91 91 40

Photographies : T. Abiven, G. Bentz, M. Bernard, C. Cochu, F. Gully, M. Le Nuz, R. Perdiat, Cap Plongée, VIVARMOR, RN Baie de St Brieuc -  
Maquette et graphisme : R. Perdiat